

SAFE • EFFICIENT • HEALTHY

TimberRock Villas

in Timberlands North



MASTER HOME BUILDER

**MASON MARTIN
HOMES.COM**

PERFORMANCE
 DESIGNED



403-588-2550

TimberRock Villas

in Timberlands North



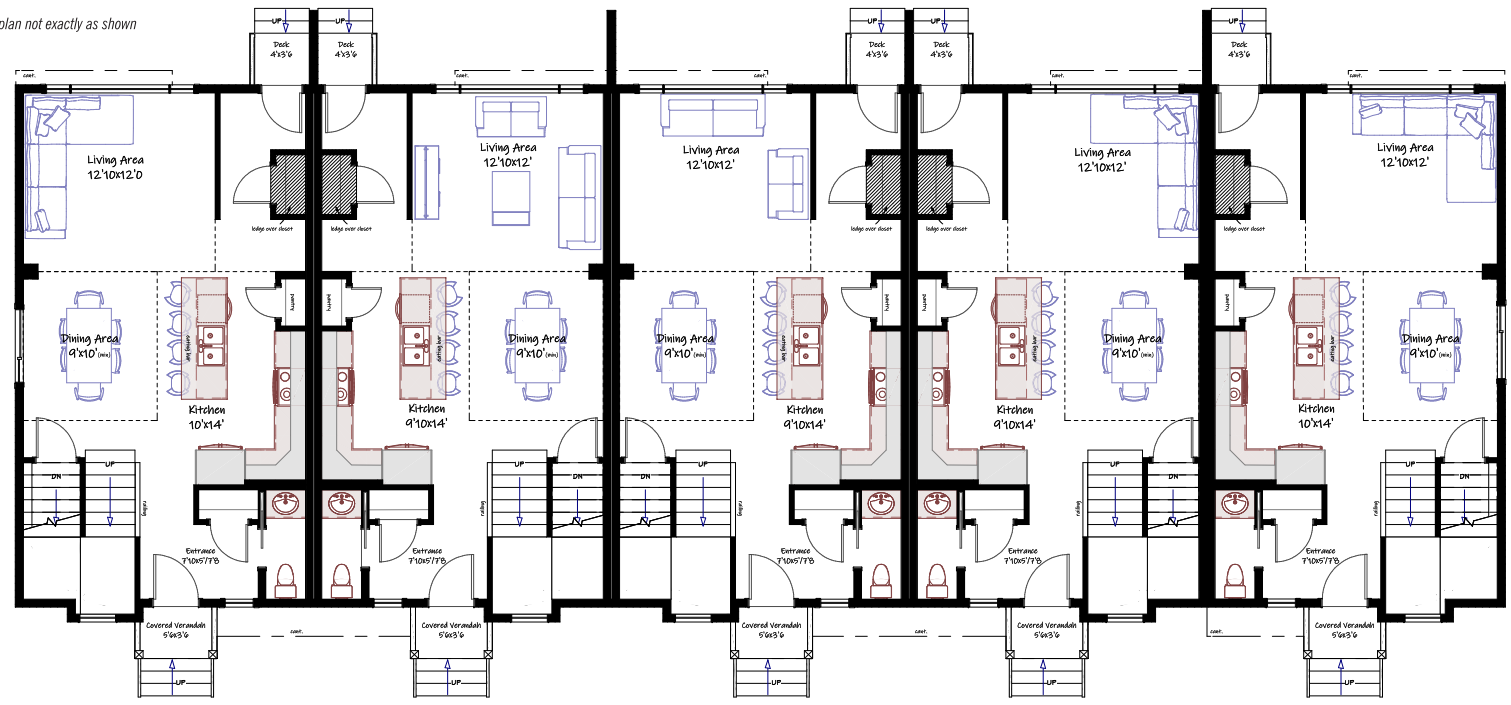
- PREMIUM FEATURES
- LARGE DETACHED GARAGES AVAILABLE
- CLOSE TO SHOPPING AND RECREATION

MASTER HOME BUILDER
MASON MARTIN HOMES.COM



MAIN FLOOR

*Floor plan not exactly as shown



UPPER FLOOR

*Floor plan not exactly as shown



INTERIOR

- OPEN CONCEPT DESIGN WITH 9' CEILINGS
- FLAT PANEL SOFT CLOSE CABINETS WITH 39" H UPPER CABINETS AND POT & PAN DRAWERS
- FULL HEIGHT TILE KITCHEN BACKSPASH
- TILE AROUND TUB/SHOWER UNITS
- TILE BACKSPASH ON VANITIES
- STAINLESS STEEL APPLIANCE PACKAGE
- LUXURY VINYL PLANK THROUGHOUT MAIN FLOOR AND BATHROOMS
- ONE-PIECE TUB/SHOWER UNITS
- MODERN CASING AND BASEBOARDS (FLAT PROFILE)
- 8" 6" QUARTZ ISLAND
- QUARTZ COUNTERTOPS THROUGHOUT
- LED POT LIGHTS
- PREMIUM INTERIOR HARDWARE
- MODERN HORIZONTAL SPINDLE RAILING

EXTERIOR

- PREMIUM VINYL SIDING, BOARD & BATTEN AND LUX METAL ACCENT
- SMART BOARD TRIM AROUND FRONT WINDOWS AND DOORS
- LIFETIME ASPHALT SHINGLES
- EXTERIOR ALUMINUM RAILING
- TRIPLE PANE VINYL WINDOWS (CASEMENT WINDOWS AS PER PLAN)

MECHANICAL

- HEAT RECOVERY VENTILATION SYSTEM
- LOW FLUSH TOILETS
- 96% HIGH EFFICIENCY FURNACE
- 80 GALLON ELECTRIC HOT WATER TANK
- PROGRAMMABLE WIFI THERMOSTAT
- LUTRON CASETA SMART HOME SYSTEM

STRUCTURE

- 24" ON CENTER 2X6 WALLS
- PARTY WALL WITH 2X6 STUDS, 16" ON CENTER AND 5/8" DRYWALL
- ROXUL SAFE AND SOUND BAR WITH RESILIENT CHANNEL AND 1" SPACE
- SPRAY FOAM RIM JOISTS
- R-50 ATTIC INSULATION

ADDITIONAL

- LEGAL FEES INCLUDED IF USING SERVUS CREDIT UNION AND MMH LAWYER
- WARRANTY COVERED BY ALBERTA NEW HOME WARRANTY WARRANTY AND CUSTOMER SATISFACTION INSPECTIONS AFTER POSSESSION DURING FIRST YEAR

High Efficiency High Efficiency Electric Hot Water Tank 96% Efficient Gas Furnace	LUTRON Caseta Smart Phone App - Safe Entry - Light Control - Heating - Compatible - Expandable Home Automation	Windows Triple Pane Low E Windows as per Plan	Interior Design Pick Your Colours with our Designer	Exterior Low Maintenance Lifetime Shingles	Cabinetry Design Your Kitchen with a Generous Allowance
Electrical Programmable Bath Fans Electrical Logout	Programmable HRV Energy Efficient Pure Fresh Air	Appliances Premium Selection Stainless Steel	Basement Custom Basement Development Available	Financing Legal Fees Included with use of Servus Credit Union	Tell Us We Are Listening, It's Your Home

* STANDARD FEATURES AND SPECIFICATIONS SUBJECT TO CHANGE AT BUILDER'S DISCRETION

INNOVATIVE • FUNCTIONAL

TimberRock Villas

in Timberlands North

- 2 & 3 BEDROOM TOWNHOMES
- WALKING DISTANCE TO SHOPPING, RESTAURANTS AND AMENITIES
- PEDESTRIAN FRIENDLY STREETS WITH NEIGHBOURHOOD TRAIL SYSTEM
- CENTRAL PARK AREA FOR GATHERING
- CANYON SKI AREA ONLY MINUTES AWAY
- 2 PUBLIC GOLF COURSES WITHIN MINUTES
- WALKING DISTANCE TO PICKLE BALL COURTS AND RECREATION
- NO CONDO FEES

LOCAL EST. 1990

Master Home Builder
with Alberta New Home Warranty Since 1991
30 Year Service Award



THE
NEW HOME
WARRANTY
INSURANCE (CANADA)
CORPORATION



info@mmh888.ca

100, 4840-51 Street, Red Deer, AB T4N 2A5